



ROTATHENE® SUPA UV

Making tanks built to last

Rotathene® SUPA UV is at the forefront of UV protection technology. The UV stabilizer is evenly distributed through the Polymer and specified for tanks made in accordance with AS/NZS 4766:2006 standards.



40,950L (9,000G)

DIAMETER: 4,400mm
 INLET HEIGHT: 2,420mm
 OVERALL HEIGHT: 2,800mm
Delivery zones apply. Not in SA.

50,050L (11,000G)

DIAMETER: 4,400mm
 INLET HEIGHT: 3,030mm
 OVERALL HEIGHT: 3,420mm

NEW RELEASE

22,500L (5,000G)



DIAMETER: 3,530mm
INLET HEIGHT: 2,530mm
OVERALL HEIGHT: 2,880mm

PRICE \$

13,500L (3,000G)



DIAMETER: 2,805mm
INLET HEIGHT: 2,360mm
OVERALL HEIGHT: 2,580mm

PRICE \$

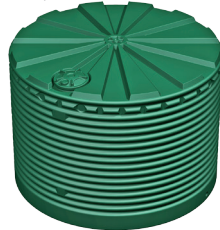
8,000L (1,800G)



DIAMETER: 2,350mm
INLET HEIGHT: 2,110mm
OVERALL HEIGHT: 2,200mm

PRICE \$

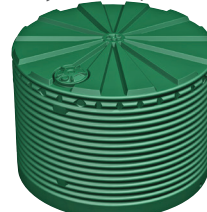
22,500L (5,000G)



DIAMETER: 3,530mm
INLET HEIGHT: 2,530mm
OVERALL HEIGHT: 2,670mm

PRICE \$

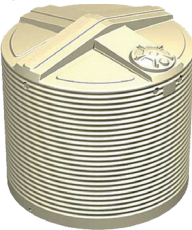
27,000L (6,000G)



DIAMETER: 3,970mm
INLET HEIGHT: 2,570mm
OVERALL HEIGHT: 2,750mm

PRICE \$

9,000L (2,000G)



DIAMETER: 2,570mm
INLET HEIGHT: 2,180mm
OVERALL HEIGHT: 2,300mm

PRICE \$

DIAMETER: 3,730mm
INLET HEIGHT: 2,410mm
OVERALL HEIGHT: 2,580mm

PRICE \$

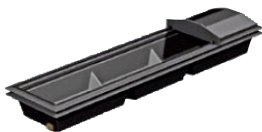
DIAMETER: 2,890mm
INLET HEIGHT: 1,570mm
OVERALL HEIGHT: 1,900mm

PRICE \$

TROUGHS

RECTANGULAR TROUGHS

SIZES 270 - 470L



270L

WIDTH: 2,400mm
DEPTH: 630mm
HEIGHT: 330mm

PRICE \$

370L

WIDTH: 2,400mm
DEPTH: 630mm
HEIGHT: 420mm

PRICE \$

470L

WIDTH: 2,400mm
DEPTH: 630mm
HEIGHT: 510mm

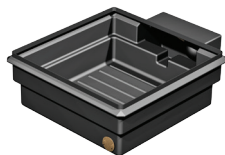
PRICE \$

- Recessed float sump on box troughs
- Removable float cover on rectangular troughs
- 5 year pro rata warranty



BOX TROUGHS

SIZES 170 - 340L



170L

WIDTH: 1,150mm
DEPTH: 960mm
HEIGHT: 350mm

PRICE \$

340L

WIDTH: 1,950mm
DEPTH: 960mm
HEIGHT: 350mm

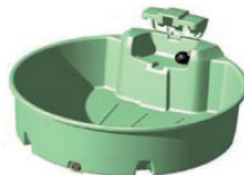
PRICE \$

- Recessed float sump on box troughs
- Removable float cover on rectangular troughs
- 5 year pro rata warranty



ROUND TROUGHS

SIZES 200 - 1,200L



200L

DIAMETER: 1,150mm
HEIGHT: 550mm
OUTLET: 65mm

PRICE \$

600L

DIAMETER: 1,550mm
HEIGHT: 650mm
OUTLET: 65mm

PRICE \$

1,200L

DIAMETER: 1,900mm
HEIGHT: 600mm
OUTLET: 65mm

PRICE \$

- Float valve has cover to protect fittings from stock
- Turned down lip for safe handling and easy transportation
- 5 year pro rata warranty



ROUND STOCK TROUGHS

SIZES 250-4,500L



- 5 year pro rata warranty
- Brass drain plugs included
- 4,500L trough features an optional float cover and improved floor design

1,400L

CORRUGATED

DIAMETER: 2,210mm
HEIGHT: 400mm
INLET: 50/40mm
OUTLET: 65mm

PRICE \$

1,900L

CORRUGATED

DIAMETER: 2,130mm
HEIGHT: 600mm
INLET: 50/40mm
OUTLET: 100mm

PRICE \$

250L

FLAT SIDED

DIAMETER: 1,000mm
HEIGHT: 420mm
INLET: 32mm
OUTLET: 65mm

PRICE \$

1,000L

FLAT SIDED

DIAMETER: 1,600mm
HEIGHT: 580mm
INLET: 32mm
OUTLET: 65mm

PRICE \$

4,500L

CORRUGATED

DIAMETER: 3,320mm
HEIGHT: 670mm
INLET: 50/40mm
OUTLET: 100mm

PRICE \$

LONG / LINKABLE TROUGHS 185L



- Easy to install and sweep clean
- Can be linked together using a single inlet point
- 5 Year Pro Rata Warranty
- 25mm valve, float and float cover included

Only available in Heritage Green only. Fittings and poly pipe required to link troughs not included.



Storage Tanks

SIZES 900 - 2,300 LITRES

- Storage tanks can be used for water, feed storage or grape storage for wine makers
- Removable lids
- Molasses, heavy duty storage tanks available
- Install outlet in any position (additional costs)
- Stackable whilst not in use
- 10 year pro rata warranty

900L LOW PROFILE
 GALLONS: 200mm
 BASE DIAMETER: 1,250mm
 DIAMETER MAX: 1,300mm
 WALL HEIGHT: 900mm
 TOTAL HEIGHT: 1,200mm

PRICE \$

2,300L

GALLONS: 500mm
 BASE DIAMETER: 1,750mm
 DIAMETER MAX: 1,950mm
 WALL HEIGHT: 970mm
 TOTAL HEIGHT: 1,200mm

PRICE \$

900 LITRE
 Low profile

2300 LITRE



Fence Feeder/Trough

SIZES 12-45L

- Durable one piece poly construction
- 50mm drain for easy cleaning
- Can be wall mounted
- Fence Troughs include a 12.7mm float valve and cover
- Optional galvanised bracket kit available for hanging trough or feeder
- 5 Year pro rata warranty

12L

WIDTH: 405mm
 DEPTH: 450mm
 HEIGHT: 280mm

PRICE \$

30L

WIDTH: 485mm
 DEPTH: 560mm
 HEIGHT: 390mm

PRICE \$

45L

WIDTH: 545mm
 DEPTH: 645mm
 HEIGHT: 445mm

PRICE \$



Treatment Baths

- Treatment baths can be linked
- Treatment bath fluid depth 95mm
- 5 Year pro rata warranty

70L

LENGTH: 2,300mm
 WIDTH: 550mm
 HEIGHT: 95/210mm



PRICE \$

Industrial Molasses Tanks

We offer a specialised consulting service for the supply of custom-fitted industrial tanks for a range of applications in the market sectors of industrial liquid storage, chemical storage, liquid feed and fertiliser.

1,000L - 22,500L

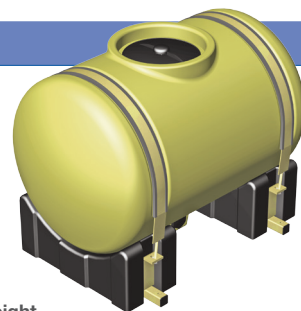
- Established national distribution service.
- Manufacturing sites in Queensland, New South Wales, Victoria and South Australia.
- Tanks designed and manufactured to align specific industrial requirements.
- Full range of fittings and attachments fitted to your specifications.



Cartage Tanks

SIZES 200L - 1,000L

- All tanks 500L and above are baffled
- All tanks feature sumps
- Tanks feature 50mm moulded outlet
- Screw on lid and breather provided
- 5 year pro rata warranty (tank only)



	Length	Width	Height	
200L	990mm	610mm	750mm	\$
300L	1380mm	610mm	750mm	\$
500L	1280mm	820mm	940mm	\$
1000L	1530mm	1200mm	1060mm	\$

Fire Fighting Units

SIZES 400 & 600 LITRES

- The Fire fighting Units come with a Davey Firefighter centrifugal pump and Honda GX 160 engine
- 3-way valve for quick suction changeover
- Reel with 36m of 19mm ID hose, hose guide and adjustable brass nozzle on 600L model
- Camlock fittings, 25mm bypass and ball valve for quick filling
- Clear volume level gauge and 50mm drain and plug
- 6m of suction hose and foot valve
- Hose hanger with 20m of 19mm ID hose and adjustable nozzle on the 400L model
- Available in bare, manual gun and auto gun
- 5 year pro rata warranty (tank only)

400L

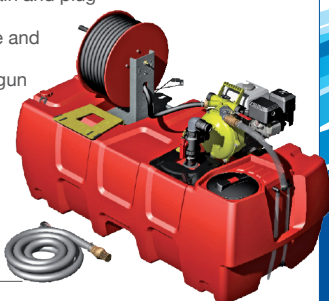
WIDTH: 1,170mm
 DEPTH: 900mm
 HEIGHT: 950mm

PRICE \$

600L

WIDTH: 1,750mm
 DEPTH: 900mm
 HEIGHT: 1,150mm

PRICE \$



Pumps and Water Tank Accessories

Team Poly recommend Davey and ClayTech pumps.

