

ROUND/TRADITIONAL TANKS FREE DELIVERY to properties within Zone A (Property delivery checklist required)

8,000L (1,800G)



DIAMETER: 2,300mm
INLET HEIGHT: 2,110mm
OVERALL HEIGHT: 2,300mm

PRICE \$

13,500L (3,000G)



DIAMETER: 2,805mm
INLET HEIGHT: 2,360mm
OVERALL HEIGHT: 2,580mm

PRICE \$

22,500L SSR (5,000G)



DIAMETER: 3,530mm
INLET HEIGHT: 2,530mm
OVERALL HEIGHT: 2,880mm

PRICE \$

Alkatuff®
TOUGH IN THE SUN

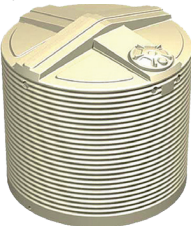
40,950L (9,000G)



DIAMETER: 4,400mm
INLET HEIGHT: 2,420mm
OVERALL HEIGHT: 2,800mm
Delivery zones apply. Not in SA.

PRICE \$

9,000L (2,000G)

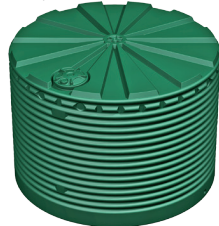


TALL
DIAMETER: 2,570mm
INLET HEIGHT: 2,180mm
OVERALL HEIGHT: 2,400mm

SQUAT
DIAMETER: 2,890mm
INLET HEIGHT: 1,570mm
OVERALL HEIGHT: 1,900mm

PRICE \$

22,500L (5,000G)

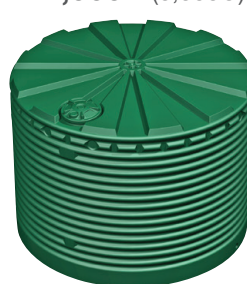


TALL
DIAMETER: 3,530mm
INLET HEIGHT: 2,530mm
OVERALL HEIGHT: 2,670mm

SQUAT
DIAMETER: 3,730mm
INLET HEIGHT: 2,410mm
OVERALL HEIGHT: 2,580mm

PRICE \$

27,000L (6,000G)



DIAMETER: 3,970mm
INLET HEIGHT: 2,570mm
OVERALL HEIGHT: 2,750mm

PRICE \$

50,050L (11,000G)

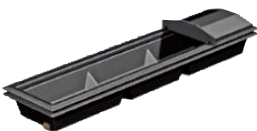


DIAMETER: 4,400mm
INLET HEIGHT: 3,030mm
OVERALL HEIGHT: 3,420mm

PRICE \$

TROUGHS

RECTANGULAR TROUGHS SIZES 270 - 470L



270L

WIDTH: 2,400mm
DEPTH: 630mm
HEIGHT: 330mm

PRICE \$

370L

WIDTH: 2,400mm
DEPTH: 630mm
HEIGHT: 420mm

PRICE \$

470L

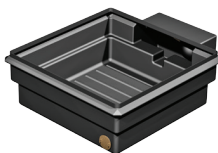
WIDTH: 2,400mm
DEPTH: 630mm
HEIGHT: 510mm

PRICE \$

- Recessed float sump on box troughs
- Removable float cover on rectangular troughs
- 5 year pro rata warranty



BOX TROUGHS SIZES 170 - 340L



170L

WIDTH: 1,150mm
DEPTH: 960mm
HEIGHT: 350mm

PRICE \$

340L

WIDTH: 1,950mm
DEPTH: 960mm
HEIGHT: 350mm

PRICE \$

- Recessed float sump on box troughs
- Removable float cover on rectangular troughs
- 5 year pro rata warranty



ROUND TROUGHS SIZES 200 - 1,200L



200L

DIAMETER: 1,150mm
HEIGHT: 550mm
OUTLET: 65mm

PRICE \$

600L

DIAMETER: 1,550mm
HEIGHT: 650mm
OUTLET: 65mm

PRICE \$

1,200L

DIAMETER: 1,900mm
HEIGHT: 600mm
OUTLET: 65mm

PRICE \$

- Float valve has cover to protect fittings from stock
- Turned down lip for safe handling and easy transportation
- 5 year pro rata warranty



ROUND STOCK TROUGHS SIZES 250-4,500L



- 5 year pro rata warranty
- Brass drain plugs included
- 4,500L trough features an optional float cover and improved floor design

1,400L
CORRUGATED

DIAMETER: 2,210mm
HEIGHT: 400mm
INLET: 50/40mm
OUTLET: 65mm

PRICE \$

1,900L
CORRUGATED

DIAMETER: 2,130mm
HEIGHT: 600mm
INLET: 50/40mm
OUTLET: 100mm

PRICE \$

250L

FLAT SIDED

DIAMETER: 1,000mm
HEIGHT: 420mm
INLET: 32mm
OUTLET: 65mm

PRICE \$

1,000L
FLAT SIDED

DIAMETER: 1,600mm
HEIGHT: 580mm
INLET: 32mm
OUTLET: 65mm

PRICE \$

4,500L
CORRUGATED

DIAMETER: 3,320mm
HEIGHT: 670mm
INLET: 50/40mm
OUTLET: 100mm

PRICE \$

LONG / LINKABLE TROUGHS 185L



- Easy to install and sweep clean
- Can be linked together using a single inlet point
- 5 Year Pro Rata Warranty
- 25mm valve, float and float cover included

Only available in Heritage Green only. Fittings and poly pipe required to link troughs not included.



Storage Tanks

SIZES 900 - 2,300 LITRES

- Storage tanks can be used for water, feed storage or grape storage for wine makers
- Removable lids
- Molasses, heavy duty storage tanks available
- Install outlet in any position (additional costs)
- Stackable whilst not in use
- 10 year pro rata warranty

900L LOW PROFILE
 GALLONS: 200mm
 BASE DIAMETER: 1,250mm
 DIAMETER MAX: 1,300mm
 WALL HEIGHT: 900mm
 TOTAL HEIGHT: 1,200mm
 PRICE \$

2,300L
 GALLONS: 500mm
 BASE DIAMETER: 1,750mm
 DIAMETER MAX: 1,950mm
 WALL HEIGHT: 970mm
 TOTAL HEIGHT: 1,200mm
 PRICE \$

900 LITRE
 Low profile



2300 LITRE

Fence Feeder/Trough

SIZES 12-45L

- Durable one piece poly construction
- 50mm drain for easy cleaning
- Can be wall mounted
- Fence Troughs include a 12.7mm float valve and cover
- Optional galvanised bracket kit available for hanging trough or feeder
- 5 Year pro rata warranty

12L
 WIDTH: 405mm
 DEPTH: 450mm
 HEIGHT: 280mm
 PRICE \$

30L
 WIDTH: 485mm
 DEPTH: 560mm
 HEIGHT: 390mm
 PRICE \$

45L
 WIDTH: 545mm
 DEPTH: 645mm
 HEIGHT: 445mm
 PRICE \$



Treatment Baths

- Treatment baths can be linked
- Treatment bath fluid depth 95mm
- 5 Year pro rata warranty

70L

LENGTH: 2,300mm
 WIDTH: 550mm
 HEIGHT: 95/210mm



PRICE \$

Cartage Tanks

SIZES 200L - 1,000L

- All Tanks 500L and above are baffled
- All tanks feature sump
- Tank feature moulded 50mm Outlet
- Screw on lid and breather are provided
- 5 year pro rata warranty (tank only)



	Length	Width	Height	
200L	990mm	610mm	750mm	\$
300L	1380mm	610mm	750mm	\$
500L	1280mm	820mm	940mm	\$
1000L	1530mm	1200mm	1060mm	\$

Industrial Molasses Tanks

We offer a specialised consulting service for the supply of custom-fitted industrial tanks for a range of applications in the market sectors of industrial liquid storage, chemical storage, liquid feed and fertiliser.

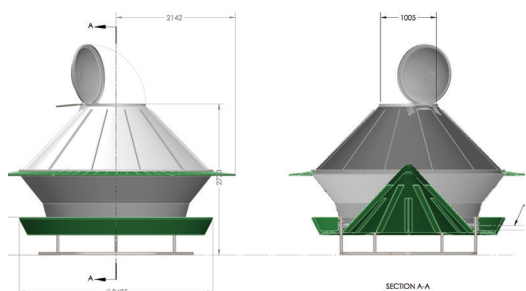
1,000L - 50,000L

- Established national distribution service.
- Manufacturing sites in Queensland, New South Wales, Victoria and South Australia.
- Tanks designed and manufactured to align specific industrial requirements.
- Full range of fittings and attachments fitted to your specifications.



Cattle Feeders

A completely portable, round modular cattle feeder, designed for durability, efficiency, ease of use and significantly cheaper transport.



CAPACITY: 9.5m³
 DIAMETER: 4,284mm

HEIGHT: 2,720mm
 BASE WIDTH: 3,485mm

Pumps and Water Tank Accessories

Team Poly recommend Davey and ClayTech pumps.

